

COMPASS

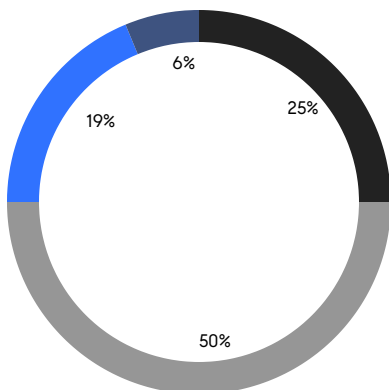
QUEENS WEEKLY LUXURY REPORT



46-30 CENTER BLVD, UNIT PH8

RESIDENTIAL CONTRACTS
\$1.25 MILLION AND UP

- SOUTHEASTERN QUEENS
- NORTHEASTERN QUEENS
- NORTHWESTERN QUEENS
- CENTRAL QUEENS



16

CONTRACTS SIGNED
THIS WEEK

\$28,891,526

TOTAL CONTRACT VOLUME

The Queens luxury real estate market, defined as all properties priced \$1.25M and above, saw 16 contracts signed this week, made up of 9 condos, and 7 houses. The previous week saw 12 deals. For more information or data, please reach out to a Compass agent.

\$1,805,721

AVERAGE ASKING PRICE

\$1,431,875

MEDIAN ASKING PRICE

\$1,133

AVERAGE PPSF

1%

AVERAGE DISCOUNT

\$28,891,526

TOTAL VOLUME

67

AVERAGE DAYS ON MARKET

182-06 Midland Parkway in Jamaica Estates entered contract this week, with a last asking price of \$4,199,000. Originally built in 1936, this single-family house offers 7 beds and 7 baths. It features 10-foot ceilings, a tiered brick entry courtyard, multiple fireplaces, a chef-inspired kitchen with high-end appliances, a formal dining room, a library, a music room, a primary bedroom with en-suite bath and walk-in closets, and much more.

Also signed this week was 184-28 Midland Parkway in Jamaica Estates, with a last asking price of \$2,999,000. Originally built in 1930, this single-family house spans approximately 2,800 square feet with 5 beds and 5 baths. It features a living room with wood-burning fireplace, a formal dining room, an eat-in kitchen, a fully-furnished basement, and much more.

9

CONDO DEAL(S)

0

CO-OP DEAL(S)

7

TOWNHOUSE DEAL(S)

\$1,442,417

AVERAGE ASKING PRICE

\$0

AVERAGE ASKING PRICE

\$2,272,826

AVERAGE ASKING PRICE

\$1,398,000

MEDIAN ASKING PRICE

\$0

MEDIAN ASKING PRICE

\$1,895,000

MEDIAN ASKING PRICE

\$1,340

AVERAGE PPSF

\$823

AVERAGE PPSF

1,128

AVERAGE SQFT

2,488

AVERAGE SQFT



182-06 MIDLAND PKWY

Jamaica Estates

TYPE	TOWNHOUSE	STATUS	CONTRACT	ASK	\$4,199,000	INITIAL	\$4,499,000
SQFT	N/A	PPSF	N/A	BEDS	7	BATHS	7
FEES	\$1,826	DOM	271				



184-28 MIDLAND PKWY

Jamaica Estates

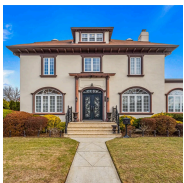
TYPE	TOWNHOUSE	STATUS	CONTRACT	ASK	\$2,999,000	INITIAL	\$2,999,000
SQFT	2,800	PPSF	\$1,071	BEDS	5	BATHS	5
FEES	\$1,307	DOM	3				



85-14 261ST ST

Floral Park

TYPE	TOWNHOUSE	STATUS	CONTRACT	ASK	\$2,389,000	INITIAL	\$2,289,000
SQFT	3,400	PPSF	\$703	BEDS	5	BATHS	5
FEES	\$851	DOM	86				



88-87 195TH ST

Hollis

TYPE	TOWNHOUSE	STATUS	CONTRACT	ASK	\$1,895,000	INITIAL	\$1,895,000
SQFT	3,072	PPSF	\$617	BEDS	7	BATHS	4
FEES	\$938	DOM	36				



198-05 EPSOM COURSE

Holliswood

TYPE	TOWNHOUSE	STATUS	CONTRACT	ASK	\$1,790,000	INITIAL	\$2,099,000
SQFT	2,363	PPSF	\$758	BEDS	5	BATHS	3.5
FEES	\$1,119	DOM	271				



24-01 QUEENS PLAZA NORTH #805

Long Island City

TYPE	CONDO	STATUS	CONTRACT	ASK	\$1,755,000	INITIAL	\$1,755,000
SQFT	1,101	PPSF	\$1,595	BEDS	2	BATHS	2
FEES	\$2,481	DOM	N/A				

Compass is a licensed real estate broker and abides by Equal Housing Opportunity laws. All material presented herein is intended for informational purposes only. Information is compiled from sources deemed reliable but is subject to errors, omissions, changes in price, condition, sale, or withdrawal without notice. No statement is made as to the accuracy of any description. All measurements and square footages are approximate. This is not intended to solicit property already listed. Nothing herein shall be construed as legal, accounting or other professional advice outside the realm of real estate brokerage.



24-01 QUEENS PLAZA NORTH #405

Long Island City

TYPE	CONDO	STATUS	CONTRACT	ASK	\$1,605,000	INITIAL	\$1,605,000
SQFT	1,101	PPSF	\$1,458	BEDS	2	BATHS	2
FEES	\$2,481	DOM	N/A				



78-29 AUSTIN ST #408

Forest Hills

TYPE	CONDO	STATUS	CONTRACT	ASK	\$1,443,750	INITIAL	\$1,443,750
SQFT	1,130	PPSF	\$1,278	BEDS	2	BATHS	2
FEES	\$1,819	DOM	N/A				



35-32 LEAVITT ST #11L

Flushing

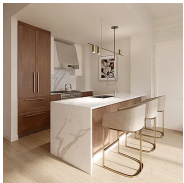
TYPE	CONDO	STATUS	CONTRACT	ASK	\$1,420,000	INITIAL	\$1,420,000
SQFT	993	PPSF	\$1,431	BEDS	2	BATHS	2
FEES	\$1,826	DOM	3				



35-32 LEAVITT ST #10D

Flushing

TYPE	CONDO	STATUS	CONTRACT	ASK	\$1,398,000	INITIAL	\$1,398,000
SQFT	1,002	PPSF	\$1,396	BEDS	2	BATHS	2
FEES	\$1,843	DOM	4				



35-32 LEAVITT ST #10A

Flushing

TYPE	CONDO	STATUS	CONTRACT	ASK	\$1,395,000	INITIAL	\$1,395,000
SQFT	911	PPSF	\$1,532	BEDS	2	BATHS	2
FEES	\$1,775	DOM	4				



35-32 LEAVITT ST #11G

Flushing

TYPE	CONDO	STATUS	CONTRACT	ASK	\$1,380,000	INITIAL	\$1,380,000
SQFT	928	PPSF	\$1,488	BEDS	2	BATHS	2
FEES	\$1,707	DOM	3				

Compass is a licensed real estate broker and abides by Equal Housing Opportunity laws. All material presented herein is intended for informational purposes only. Information is compiled from sources deemed reliable but is subject to errors, omissions, changes in price, condition, sale, or withdrawal without notice. No statement is made as to the accuracy of any description. All measurements and square footages are approximate. This is not intended to solicit property already listed. Nothing herein shall be construed as legal, accounting or other professional advice outside the realm of real estate brokerage.



28-15 159TH ST

Murray Hill

TYPE	TOWNHOUSE	STATUS	CONTRACT	ASK	\$1,338,888	INITIAL	\$1,338,888
SQFT	2,184	PPSF	\$614	BEDS	4	BATHS	2.5
FEES	N/A	DOM	36				



207-16 28TH AVE

Bayside

TYPE	TOWNHOUSE	STATUS	CONTRACT	ASK	\$1,298,888	INITIAL	\$1,298,888
SQFT	1,107	PPSF	\$1,173	BEDS	3	BATHS	3
FEES	\$938	DOM	20				



13-14 JACKSON AVE #3W

Long Island City

TYPE	CONDO	STATUS	CONTRACT	ASK	\$1,295,000	INITIAL	\$1,295,000
SQFT	1,083	PPSF	\$1,196	BEDS	2	BATHS	2
FEES	\$1,114	DOM	119				



207-19 MELISSA COURT #217U

Bay Terrace

TYPE	CONDO	STATUS	CONTRACT	ASK	\$1,290,000	INITIAL	\$1,290,000
SQFT	1,900	PPSF	\$679	BEDS	3	BATHS	3
FEES	\$912	DOM	12				

Compass is a licensed real estate broker and abides by Equal Housing Opportunity laws. All material presented herein is intended for informational purposes only. Information is compiled from sources deemed reliable but is subject to errors, omissions, changes in price, condition, sale, or withdrawal without notice. No statement is made as to the accuracy of any description. All measurements and square footages are approximate. This is not intended to solicit property already listed. Nothing herein shall be construed as legal, accounting or other professional advice outside the realm of real estate brokerage.