

COMPASS

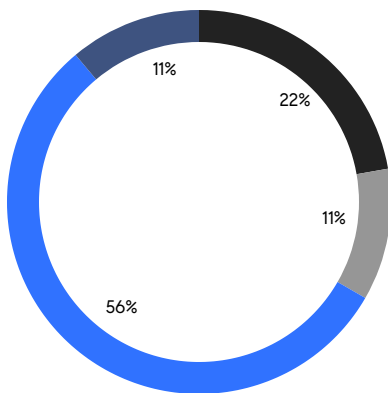
QUEENS WEEKLY LUXURY REPORT



46-30 CENTER BLVD, UNIT 1204

RESIDENTIAL CONTRACTS
\$1.25 MILLION AND UP

- SOUTHEASTERN QUEENS
- CENTRAL QUEENS
- NORTHEASTERN QUEENS
- NORTHWESTERN QUEENS



9

CONTRACTS SIGNED
THIS WEEK

\$18,022,888

TOTAL CONTRACT VOLUME

The Queens luxury real estate market, defined as all properties priced \$1.25M and above, saw 9 contracts signed this week, made up of 1 condo, and 8 houses. The previous week saw 12 deals. For more information or data, please reach out to a Compass agent.

\$2,002,544

AVERAGE ASKING PRICE

\$1,485,000

MEDIAN ASKING PRICE

\$727

AVERAGE PPSF

1%

AVERAGE DISCOUNT

\$18,022,888

TOTAL VOLUME

86

AVERAGE DAYS ON MARKET

84-01 Midland Parkway entered contract this week, with a last asking price of \$5,775,000. Originally built in 1935, this historic single-family house spans 7,987 square feet with 4 beds and 4 full baths. It features a custom wrought metal banister and chandelier, crown moldings in every room, hand-painted murals, a ballroom with marble fireplace and crystal lighting, a formal dining room, a primary bedroom with cove ceiling, a gym and sauna, a 3-car heated garage, and much more.

Also signed this week was 51 Summer Street in Forest Hills, with a last asking price of \$2,288,000. This house spans 3,122 square feet with 4 beds and 3 full baths. It features a designer, open-concept kitchen with high-end appliances, hardwood floors and new windows throughout, central air conditioning, a grand entry room with skylight, a primary bedroom with private terrace, a finished attic storage area, a rear garden and patio, and much more.

1

CONDO DEAL(S)

0

CO-OP DEAL(S)

8

TOWNHOUSE DEAL(S)

\$1,485,000

AVERAGE ASKING PRICE

\$0

AVERAGE ASKING PRICE

\$2,067,236

AVERAGE ASKING PRICE

\$1,485,000

MEDIAN ASKING PRICE

\$0

MEDIAN ASKING PRICE

\$1,443,944

MEDIAN ASKING PRICE

\$1,359

AVERAGE PPSF

\$647

AVERAGE PPSF

1,093

AVERAGE SQFT

3,193

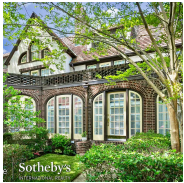
AVERAGE SQFT



84-01 MIDLAND PARKWAY

Jamaica Estates

TYPE	TOWNHOUSE	STATUS	CONTRACT	ASK	\$5,775,000	INITIAL	\$5,575,000
SQFT	7,987	PPSF	\$724	BEDS	4	BATHS	4
FEES	\$2,301	DOM	114				



51 SUMMER ST

Forest Hills

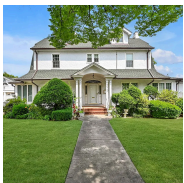
TYPE	TOWNHOUSE	STATUS	CONTRACT	ASK	\$2,288,000	INITIAL	\$2,288,000
SQFT	3,122	PPSF	\$733	BEDS	4	BATHS	3.5
FEES	\$1,000	DOM	100				



33-64 165TH ST

Murray Hill

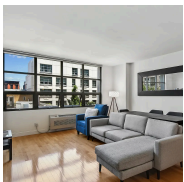
TYPE	TOWNHOUSE	STATUS	CONTRACT	ASK	\$1,650,000	INITIAL	\$1,780,000
SQFT	2,719	PPSF	\$607	BEDS	5	BATHS	3.5
FEES	\$981	DOM	63				



207-15 39TH AVE

Bayside

TYPE	TOWNHOUSE	STATUS	CONTRACT	ASK	\$1,488,888	INITIAL	\$1,488,888
SQFT	3,443	PPSF	\$433	BEDS	4	BATHS	2.5
FEES	\$1,279	DOM	40				



5-09 48TH AVE #3R

Long Island City

TYPE	CONDO	STATUS	CONTRACT	ASK	\$1,485,000	INITIAL	\$1,485,000
SQFT	1,093	PPSF	\$1,359	BEDS	2	BATHS	2
FEES	\$1,978	DOM	99				



240-50 POPLAR ST

Douglaston

TYPE	TOWNHOUSE	STATUS	CONTRACT	ASK	\$1,399,000	INITIAL	\$1,399,000
SQFT	2,650	PPSF	\$528	BEDS	5	BATHS	3.5
FEES	\$1,210	DOM	106				

Compass is a licensed real estate broker and abides by Equal Housing Opportunity laws. All material presented herein is intended for informational purposes only. Information is compiled from sources deemed reliable but is subject to errors, omissions, changes in price, condition, sale, or withdrawal without notice. No statement is made as to the accuracy of any description. All measurements and square footages are approximate. This is not intended to solicit property already listed. Nothing herein shall be construed as legal, accounting or other professional advice outside the realm of real estate brokerage.



86-23 SANTIAGO ST

Holliswood

TYPE	TOWNHOUSE	STATUS	CONTRACT	ASK	\$1,350,000	INITIAL	\$1,350,000
SQFT	2,222	PPSF	\$608	BEDS	4	BATHS	3
FEES	\$1,117	DOM	132				



207-49 28TH AVE

Bayside

TYPE	TOWNHOUSE	STATUS	CONTRACT	ASK	\$1,298,000	INITIAL	\$1,298,000
SQFT	1,900	PPSF	\$683	BEDS	4	BATHS	3
FEES	\$966	DOM	42				



208-19 32ND AVE

Bayside

TYPE	TOWNHOUSE	STATUS	CONTRACT	ASK	\$1,289,000	INITIAL	\$1,389,000
SQFT	1,500	PPSF	\$860	BEDS	3	BATHS	2.5
FEES	\$652	DOM	72				

Compass is a licensed real estate broker and abides by Equal Housing Opportunity laws. All material presented herein is intended for informational purposes only. Information is compiled from sources deemed reliable but is subject to errors, omissions, changes in price, condition, sale, or withdrawal without notice. No statement is made as to the accuracy of any description. All measurements and square footages are approximate. This is not intended to solicit property already listed. Nothing herein shall be construed as legal, accounting or other professional advice outside the realm of real estate brokerage.