

AUG 21 - 27, 2023

The Queens luxury real estate market, defined as all properties priced \$1M and above, saw 19 contracts signed this week, made up of 6 condos, and 13 houses. The previous week saw 16 deals. For more information or data, please reach out to a Compass agent.

\$1,665,665

Average Asking Price

\$1,450,000

Median Asking Price

\$1,032

Average PPSF

1%

Average Discount

\$31,647,618

Total Volume

77

Average Days On Market

Unit 905 at 46-30 Center Boulevard in Long Island City entered contract this week, with a last asking price of \$2,898,000. Built in 2008, this corner condo unit spans 1,653 square feet with 3 beds and 3 full baths. It features floor-to-ceiling windows, city, park, and river views, a primary bedroom with balcony and en-suite bath, a gourmet kitchen with high-end appliances, and much more. The building provides a 24-hour doorman and concierge, a state-of-the-art fitness center, a rooftop garden, an indoor/outdoor lounge, and many other amenities.

Also signed this week was Unit PH2B at 133-27 39th Avenue in Flushing, with a last asking price of \$2,735,730. Built in 2016, this penthouse condo unit spans 2,112 square feet with 3 beds and 3 full baths. It features dedicated living and dining rooms, a built-in gas fireplace, glass walls, an inner-facing balcony, a kitchen with high-end appliances and cabinetry, oak floors, and much more. The building provides an indoor heated pool, a sauna, multiple gyms, a library and lounge, storage units, and many other amenities.

6

Condo Deal(s)

0

Co-op Deal(s)

13

Townhouse Deal(s)

\$1,908,955

Average Asking Price

\$0

Average Asking Price

\$1,553,376

Average Asking Price

\$1,587,500

Median Asking Price

\$0

Median Asking Price

\$1,450,000

Median Asking Price

\$1,332

Average PPSF

N/A

Average PPSF

\$853

Average PPSF

1,416

Average SqFt

N/A

Average SqFt

2,030

Average SqFt



46-30 CENTER BLVD #905

Hunters Point

Type Condo
SqFt 1,653
PPSF \$1,754
Status Contract
Beds 3
Fees \$1,850

Ask \$2,898,000
Baths 3
DOM N/A



133-27 39TH AVE #PH2B

Flushing

Type Condo
SqFt 2,112
PPSF \$1,296
Status Contract
Beds 3
Fees \$3,630

Ask \$2,735,730
Baths 3
DOM 305



69-36 223RD ST

Oakland Gardens

Type Townhouse
SqFt 1,374
PPSF \$1,732
Status Contract
Beds 6
Fees \$642

Ask \$2,380,000
Baths 5.5
DOM 2

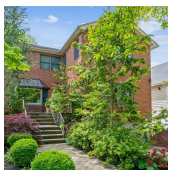


147-04 8TH AVE

Whitestone

Type Townhouse
SqFt 1,700
PPSF \$1,158
Status Contract
Beds 4
Fees \$987

Ask \$1,968,888
Baths 3.5
DOM 25



86-56 MARENGO ST

Holliswood Jamaica

Type Townhouse
SqFt 2,500
PPSF \$760
Status Contract
Beds 5
Fees \$1,006

Ask \$1,899,000
Baths 4.5
DOM 24



5-26 47TH RD #3A

Long Island City

Type Condo
SqFt 1,400
PPSF \$1,250
Status Contract
Beds 2
Fees \$2,290

Ask \$1,750,000
Baths 2
DOM 135

Compass is a licensed real estate broker and abides by Equal Housing Opportunity laws. All material presented herein is intended for informational purposes only. Information is compiled from sources deemed reliable but is subject to errors, omissions, changes in price, condition, sale, or withdrawal without notice. No statement is made as to the accuracy of any description. All measurements and square footages are approximate. This is not intended to solicit property already listed. Nothing herein shall be construed as legal, accounting or other professional advice outside the realm of real estate brokerage.



105 82ND RD

Type Townhouse
Sqft N/A
PPSF N/A

Status Contract
Beds 4
Fees \$977

Kew Gardens

Ask \$1,518,000
Baths 3
DOM 62



40-26 171ST ST

Type Townhouse
Sqft 2,630
PPSF \$570

Status Contract
Beds 7
Fees \$798

Murray Hill

Ask \$1,498,000
Baths 3.5
DOM 56



82-27 BELL BLVD

Type Townhouse
Sqft 3,040
PPSF \$490

Status Contract
Beds 6
Fees \$1,204

Oakland Gardens

Ask \$1,489,000
Baths 4.5
DOM 117



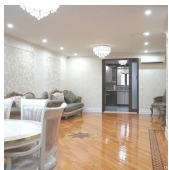
35-35 28TH ST

Type Townhouse
Sqft 2,400
PPSF \$605

Status Contract
Beds 6
Fees \$785

Astoria

Ask \$1,450,000
Baths 3
DOM 49



105-39 62ND DR

Type Townhouse
Sqft N/A
PPSF N/A

Status Contract
Beds 3
Fees \$721

Forest Hills

Ask \$1,448,000
Baths 3.5
DOM 42



107-06 QUEENS BLVD #8H

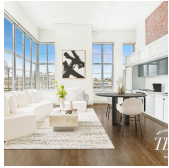
Type Condo
Sqft 1,223
PPSF \$1,166

Status Contract
Beds 2
Fees \$2,315

Forest Hills

Ask \$1,425,000
Baths 2
DOM 42

Compass is a licensed real estate broker and abides by Equal Housing Opportunity laws. All material presented herein is intended for informational purposes only. Information is compiled from sources deemed reliable but is subject to errors, omissions, changes in price, condition, sale, or withdrawal without notice. No statement is made as to the accuracy of any description. All measurements and square footages are approximate. This is not intended to solicit property already listed. Nothing herein shall be construed as legal, accounting or other professional advice outside the realm of real estate brokerage.



27-28 THOMSON AVE #229

Long Island City

Type	Condo	Status	Contract
Sqft	1,139	Beds	2
PPSF	\$1,207	Fees	\$1,347

Ask	\$1,375,000
Baths	2
DOM	85



31-59 47TH ST

Astoria

Type	Townhouse	Status	Contract
Sqft	N/A	Beds	5
PPSF	N/A	Fees	\$778

Ask	\$1,349,000
Baths	2
DOM	147



13-03 136TH ST

College Point

Type	Townhouse	Status	Contract
Sqft	1,444	Beds	6
PPSF	\$918	Fees	\$608

Ask	\$1,325,000
Baths	4
DOM	122

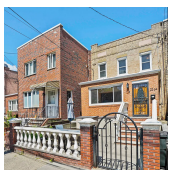


61-19 LITTLE NECK PARKWAY

Little Neck

Type	Townhouse	Status	Contract
Sqft	1,980	Beds	4
PPSF	\$656	Fees	\$798

Ask	\$1,299,000
Baths	2
DOM	22

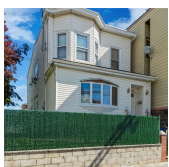


22-64 CRESCENT ST

Astoria

Type	Townhouse	Status	Contract
Sqft	1,360	Beds	3
PPSF	\$953	Fees	\$586

Ask	\$1,295,000
Baths	2
DOM	14



124-13 22ND AVE

College Point

Type	Townhouse	Status	Contract
Sqft	1,872	Beds	7
PPSF	\$681	Fees	\$604

Ask	\$1,275,000
Baths	3
DOM	107

Compass is a licensed real estate broker and abides by Equal Housing Opportunity laws. All material presented herein is intended for informational purposes only. Information is compiled from sources deemed reliable but is subject to errors, omissions, changes in price, condition, sale, or withdrawal without notice. No statement is made as to the accuracy of any description. All measurements and square footages are approximate. This is not intended to solicit property already listed. Nothing herein shall be construed as legal, accounting or other professional advice outside the realm of real estate brokerage.



41-05 29TH ST #11C

Type Condo
Sqft 966
PPSF \$1,315

Status Contract
Beds 2
Fees \$1,711

Long Island City

Ask \$1,270,000
Baths 2
DOM 14

Compass is a licensed real estate broker and abides by Equal Housing Opportunity laws. All material presented herein is intended for informational purposes only. Information is compiled from sources deemed reliable but is subject to errors, omissions, changes in price, condition, sale, or withdrawal without notice. No statement is made as to the accuracy of any description. All measurements and square footages are approximate. This is not intended to solicit property already listed. Nothing herein shall be construed as legal, accounting or other professional advice outside the realm of real estate brokerage.