

FEB 14 - 20, 2022

The Long Island City luxury real estate market, defined as all properties priced \$1M and above, saw 14 contracts signed this week, made up of 13 condos, and 1 house. The previous week saw 5 deals. For more information or data, please reach out to a Compass agent.

\$1,405,457

Average Asking Price

\$1,471,886

Median Asking Price

\$1,413

Average PPSF

1%

Average Discount

\$19,676,385

Total Volume

394

Average Days On Market

Unit 8J at 5SL, located at 5-09 48th Avenue in Hunters Point, entered contract this week, with a last asking price of \$1,625,000. This penthouse-level condo spans 1,102 square feet with 2 beds and 2 full baths. It features a 653-square foot private terrace, a chef's kitchen with high-end appliances and quartz countertops, built-in speakers, a washer and dryer, maple hardwood flooring throughout, and much more. The building provides a 24-hour doorman, a live-in superintendent, private enclosed parking, a fitness center, a common rooftop garden, and many other amenities.

Also signed this week was Unit 3208 at Skyline Tower, located at 3 Court Square in Hunters Point, with a last asking price of \$1,618,542. Built in 2019, this condo spans 978 square feet with 2 beds and 2 full baths. It features 360-degree panoramic views, a contemporary L-shaped kitchen with high-end appliances, a primary bedroom with spa-inspired bath, and much more. The building provides a state-of-the-art fitness center, a spa and steam room, a business center, and many additional amenities.

13

Condo Deal(s)

0

Co-op Deal(s)

1

Townhouse Deal(s)

\$1,422,030

Average Asking Price

\$0

Average Asking Price

\$1,190,000

Average Asking Price

\$1,473,888

Median Asking Price

\$0

Median Asking Price

\$1,190,000

Median Asking Price

\$1,479

Average PPSF

N/A

Average PPSF

\$559

Average PPSF

969

Average SqFt

N/A

Average SqFt

2,130

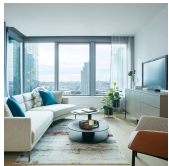
Average SqFt



5 SL (5-26 47 RD) # 8 J

Hunters Point

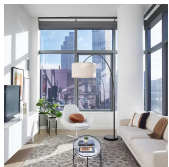
Type	Condo	Status	Contract	Ask	\$1,625,000
SqFt	1,102	Beds	2	Baths	2
PPSF	\$1,475	Fees	\$1,550	DOM	202



SKYLINE TOWER (3 CT SQ) # 3 2 0 8

Hunters Point

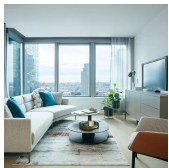
Type	Condo	Status	Contract	Ask	\$1,618,542
SqFt	978	Beds	2	Baths	2
PPSF	\$1,655	Fees	\$1,422	DOM	N/A



SKYLINE TOWER (3 CT SQ) # 3 0 0 8

Hunters Point

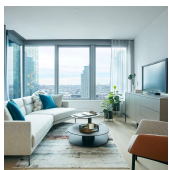
Type	Condo	Status	Contract	Ask	\$1,608,228
SqFt	978	Beds	2	Baths	2
PPSF	\$1,645	Fees	\$1,422	DOM	327



SKYLINE TOWER (3 CT SQ) # 2 3 0 8

Hunters Point

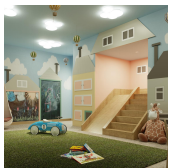
Type	Condo	Status	Contract	Ask	\$1,575,000
SqFt	978	Beds	2	Baths	2
PPSF	\$1,611	Fees	\$1,399	DOM	N/A



SKYLINE TOWER (3 CT SQ) # 3 8 0 8

Hunters Point

Type	Condo	Status	Contract	Ask	\$1,543,300
SqFt	964	Beds	2	Baths	2
PPSF	\$1,601	Fees	\$1,379	DOM	N/A



SKYLINE TOWER (3 CT SQ) # 5 3 2

Hunters Point

Type	Condo	Status	Contract	Ask	\$1,481,918
SqFt	1,006	Beds	2	Baths	2
PPSF	\$1,474	Fees	\$1,478	DOM	337

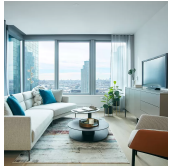
Compass is a licensed real estate broker and abides by Equal Housing Opportunity laws. All material presented herein is intended for informational purposes only. Information is compiled from sources deemed reliable but is subject to errors, omissions, changes in price, condition, sale, or withdrawal without notice. No statement is made as to the accuracy of any description. All measurements and square footages are approximate. This is not intended to solicit property already listed. Nothing herein shall be construed as legal, accounting or other professional advice outside the realm of real estate brokerage.



SKYLINE TOWER (27-17 42 RD) #3E

Hunters Point

Type	Condo	Status	Contract	Ask	\$1,473,888
Sqft	1,228	Beds	2	Baths	2
PPSF	\$1,201	Fees	\$1,473	DOM	757



SKYLINE TOWER (3 CT SQ) #1201

Hunters Point

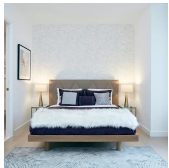
Type	Condo	Status	Contract	Ask	\$1,469,883
Sqft	930	Beds	2	Baths	2
PPSF	\$1,581	Fees	\$1,330	DOM	N/A



SKYLINE TOWER (3 CT SQ) #1803

Hunters Point

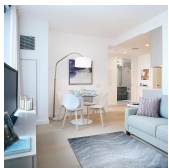
Type	Condo	Status	Contract	Ask	\$1,397,708
Sqft	992	Beds	2	Baths	2
PPSF	\$1,409	Fees	\$1,436	DOM	N/A



SKYLINE TOWER (3 CT SQ) #1205

Hunters Point

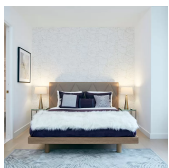
Type	Condo	Status	Contract	Ask	\$1,226,512
Sqft	932	Beds	2	Baths	2
PPSF	\$1,316	Fees	\$1,325	DOM	552



SKYLINE TOWER (3 CT SQ) #1105

Hunters Point

Type	Condo	Status	Contract	Ask	\$1,221,852
Sqft	932	Beds	2	Baths	2
PPSF	\$1,311	Fees	\$1,325	DOM	N/A

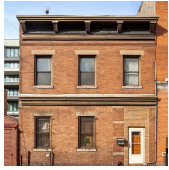


SKYLINE TOWER (3 CT SQ) #705

Hunters Point

Type	Condo	Status	Contract	Ask	\$1,194,934
Sqft	932	Beds	2	Baths	2
PPSF	\$1,283	Fees	\$1,325	DOM	N/A

Compass is a licensed real estate broker and abides by Equal Housing Opportunity laws. All material presented herein is intended for informational purposes only. Information is compiled from sources deemed reliable but is subject to errors, omissions, changes in price, condition, sale, or withdrawal without notice. No statement is made as to the accuracy of any description. All measurements and square footages are approximate. This is not intended to solicit property already listed. Nothing herein shall be construed as legal, accounting or other professional advice outside the realm of real estate brokerage.



36-26 32 ST

Type Multihouse
Sqft 2,130
PPSF \$559

Status Contract
Beds 6
Fees \$188

Astoria

Ask \$1,190,000
Baths 2
DOM 61



SKYLINE TOWER (3 CT SQ) # 4304

Type Condo
Sqft 635
PPSF \$1,653

Status Contract
Beds 1
Fees \$925

Hunters Point

Ask \$1,049,620
Baths 1
DOM 522

Compass is a licensed real estate broker and abides by Equal Housing Opportunity laws. All material presented herein is intended for informational purposes only. Information is compiled from sources deemed reliable but is subject to errors, omissions, changes in price, condition, sale, or withdrawal without notice. No statement is made as to the accuracy of any description. All measurements and square footages are approximate. This is not intended to solicit property already listed. Nothing herein shall be construed as legal, accounting or other professional advice outside the realm of real estate brokerage.

© 2020 Compass. This report and information provided in this report are proprietary to Compass and may not be sold, used or reprinted, in whole or in part, without the prior written consent in each instance of Compass. Data is subject to revision. Sourced from Compass proprietary database. All rights reserved.

compass.com