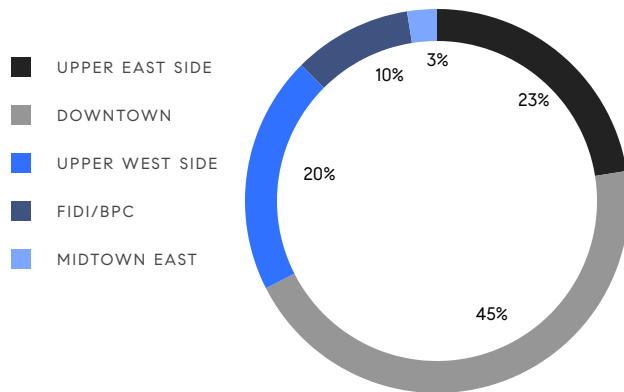


MANHATTAN WEEKLY LUXURY REPORT



240 RIVERSIDE BLVD #12A, ALAN CHORM, PHOTO BY RYAN LAHIFF (RISE MEDIA)

RESIDENTIAL CONTRACTS
\$3.5 MILLION AND UP



40

CONTRACTS SIGNED
THIS WEEK

\$268,458,980

TOTAL CONTRACT VOLUME

The Manhattan luxury real estate market, defined as all properties priced \$3.5M and above, saw 40 contracts signed this week, made up of 29 condos, 8 co-ops, and 3 houses. The previous week saw 52 deals. For more information or data, please reach out to a Compass agent.

\$6,711,475

AVERAGE ASKING PRICE

\$4,762,500

MEDIAN ASKING PRICE

\$2,609

AVERAGE PPSF

2%

AVERAGE DISCOUNT

\$268,458,980

TOTAL VOLUME

150

AVERAGE DAYS ON MARKET

Unit PH30 at 301 East 80th Street on the Upper East Side entered contract this week, with a last asking price of \$27,495,000. Built in 2019, this full-floor penthouse condo spans 5,452 square feet with 6 beds and 7 full baths. It features three private terraces totaling 893 exterior square feet, 12-foot ceilings throughout, a private elevator, a formal dining room, a windowed eat-in kitchen with high-end appliances, a corner primary suite with a large dressing room and walk-in closet, and much more. The building provides a windowed library lounge, a doorman and concierge, an expansive fitness center, and many other amenities.

Also signed this week was Unit PHN/PHS at 374 Broome Street in NoLita, with a last asking price of \$18,000,000. This combined set of penthouse condos spans more than 6,100 square feet with 6 beds and 6 full baths. It features over 3,300 square feet of outdoor rooftop terrace space, triple exposures, an open kitchen with high-end appliances, 12-foot ceilings, gas fireplaces, a built-in projector, a custom wine cellar, oversized windows, and much more.

29

CONDO DEAL(S)

8

CO-OP DEAL(S)

3

TOWNHOUSE DEAL(S)

\$6,796,689

AVERAGE ASKING PRICE

\$5,638,750

AVERAGE ASKING PRICE

\$8,748,334

AVERAGE ASKING PRICE

\$4,750,000

MEDIAN ASKING PRICE

\$4,495,000

MEDIAN ASKING PRICE

\$8,300,000

MEDIAN ASKING PRICE

\$2,785

AVERAGE PPSF

\$1,626

AVERAGE PPSF

2,315

AVERAGE SQFT

5,866

AVERAGE SQFT



301 EAST 80TH ST #PH30

Yorkville

TYPE	CONDO	STATUS	CONTRACT	ASK	\$27,495,000	INITIAL	\$30,000,000
SQFT	5,452	PPSF	\$5,044	BEDS	5	BATHS	7.5
FEES	\$16,699	DOM	337				



374 BROOME ST #PHN/PHS

Nolita

TYPE	CONDO	STATUS	CONTRACT	ASK	\$18,000,000	INITIAL	\$18,000,000
SQFT	6,164	PPSF	\$2,921	BEDS	6	BATHS	6.5
FEES	\$14,913	DOM	85				



109 EAST 79TH ST #8W

Upper East Side

TYPE	CONDO	STATUS	CONTRACT	ASK	\$16,500,000	INITIAL	\$16,050,000
SQFT	4,129	PPSF	\$3,997	BEDS	5	BATHS	5.5
FEES	\$10,490	DOM	160				



21 EAST 79TH ST #9

Upper East Side

TYPE	COOP	STATUS	CONTRACT	ASK	\$12,950,000	INITIAL	\$12,950,000
SQFT	N/A	PPSF	N/A	BEDS	4	BATHS	3.5
FEES	N/A	DOM	27				



36 BLEECKER ST #5A

Noho

TYPE	CONDO	STATUS	CONTRACT	ASK	\$10,995,000	INITIAL	\$10,995,000
SQFT	3,280	PPSF	\$3,353	BEDS	4	BATHS	4.5
FEES	\$12,194	DOM	43				



153 EAST 78TH ST #4

Lenox Hill

TYPE	CONDO	STATUS	CONTRACT	ASK	\$10,995,000	INITIAL	\$11,250,000
SQFT	3,966	PPSF	\$2,773	BEDS	5	BATHS	5
FEES	\$11,938	DOM	85				

Compass is a licensed real estate broker and abides by Equal Housing Opportunity laws. All material presented herein is intended for informational purposes only. Information is compiled from sources deemed reliable but is subject to errors, omissions, changes in price, condition, sale, or withdrawal without notice. No statement is made as to the accuracy of any description. All measurements and square footages are approximate. This is not intended to solicit property already listed. Nothing herein shall be construed as legal, accounting or other professional advice outside the realm of real estate brokerage.



318 WEST 22ND ST

Chelsea

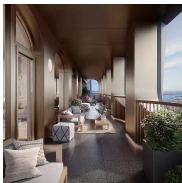
TYPE	TOWNHOUSE	STATUS	CONTRACT	ASK	\$9,950,000	INITIAL	\$9,950,000
SQFT	7,315	PPSF	\$1,361	BEDS	22	BATHS	7
FEES	\$8,176	DOM	117				



318 WEST 78TH ST

Upper West Side

TYPE	TOWNHOUSE	STATUS	CONTRACT	ASK	\$8,300,000	INITIAL	\$8,600,000
SQFT	6,795	PPSF	\$1,222	BEDS	6	BATHS	7.5
FEES	\$4,364	DOM	282				



130 WILLIAM ST #PH60A

Financial District

TYPE	CONDO	STATUS	CONTRACT	ASK	\$8,295,990	INITIAL	\$8,295,990
SQFT	2,539	PPSF	\$3,268	BEDS	3	BATHS	3.5
FEES	\$6,060	DOM	34				



4 JANE ST

West Village

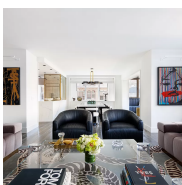
TYPE	TOWNHOUSE	STATUS	CONTRACT	ASK	\$7,995,000	INITIAL	\$7,995,000
SQFT	3,486	PPSF	\$2,294	BEDS	6	BATHS	4.5
FEES	\$2,599	DOM	54				



109 EAST 79TH ST #3N

Upper East Side

TYPE	CONDO	STATUS	CONTRACT	ASK	\$6,185,000	INITIAL	\$6,185,000
SQFT	1,863	PPSF	\$3,320	BEDS	2	BATHS	2.5
FEES	\$4,727	DOM	157				

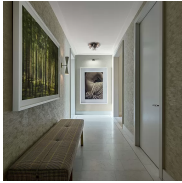


150 EAST 69TH ST #8DE

Lenox Hill

TYPE	COOP	STATUS	CONTRACT	ASK	\$5,650,000	INITIAL	\$6,350,000
SQFT	3,000	PPSF	\$1,884	BEDS	4	BATHS	3.5
FEES	\$4,839	DOM	406				

Compass is a licensed real estate broker and abides by Equal Housing Opportunity laws. All material presented herein is intended for informational purposes only. Information is compiled from sources deemed reliable but is subject to errors, omissions, changes in price, condition, sale, or withdrawal without notice. No statement is made as to the accuracy of any description. All measurements and square footages are approximate. This is not intended to solicit property already listed. Nothing herein shall be construed as legal, accounting or other professional advice outside the realm of real estate brokerage.



200 AMSTERDAM AVE #6C

Upper West Side

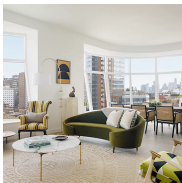
TYPE	CONDO	STATUS	CONTRACT	ASK	\$5,650,000	INITIAL	\$5,650,000
SQFT	2,440	PPSF	\$2,316	BEDS	3	BATHS	3.5
FEES	\$6,210	DOM	91				



515 WEST 18TH ST #702

Chelsea

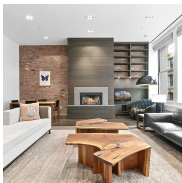
TYPE	CONDO	STATUS	CONTRACT	ASK	\$5,250,000	INITIAL	\$5,250,000
SQFT	1,941	PPSF	\$2,705	BEDS	3	BATHS	3
FEES	\$6,320	DOM	116				



515 WEST 18TH ST #1402

Chelsea

TYPE	CONDO	STATUS	CONTRACT	ASK	\$5,195,000	INITIAL	\$5,195,000
SQFT	1,654	PPSF	\$3,141	BEDS	2	BATHS	2.5
FEES	\$5,912	DOM	262				



109 GREENE ST #3B

Soho

TYPE	CONDO	STATUS	CONTRACT	ASK	\$5,100,000	INITIAL	\$5,100,000
SQFT	2,600	PPSF	\$1,962	BEDS	3	BATHS	3.5
FEES	\$7,403	DOM	32				



100 BARCLAY ST #11Q

Tribeca

TYPE	CONDO	STATUS	CONTRACT	ASK	\$4,998,000	INITIAL	\$4,998,000
SQFT	2,063	PPSF	\$2,423	BEDS	3	BATHS	3.5
FEES	\$6,136	DOM	78				



225 FIFTH AVE #PHR

Nomad

TYPE	CONDO	STATUS	CONTRACT	ASK	\$4,995,000	INITIAL	\$4,950,000
SQFT	2,000	PPSF	\$2,498	BEDS	3	BATHS	3
FEES	\$7,111	DOM	61				

Compass is a licensed real estate broker and abides by Equal Housing Opportunity laws. All material presented herein is intended for informational purposes only. Information is compiled from sources deemed reliable but is subject to errors, omissions, changes in price, condition, sale, or withdrawal without notice. No statement is made as to the accuracy of any description. All measurements and square footages are approximate. This is not intended to solicit property already listed. Nothing herein shall be construed as legal, accounting or other professional advice outside the realm of real estate brokerage.



300 CENTRAL PARK WEST #17F

Upper West Side

TYPE	COOP	STATUS	CONTRACT	ASK	\$4,995,000	INITIAL	\$6,995,000
SQFT	N/A	PPSF	N/A	BEDS	2	BATHS	3
FEES	\$5,519	DOM	334				



527 WEST 27TH ST #3S

Chelsea

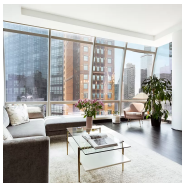
TYPE	CONDO	STATUS	CONTRACT	ASK	\$4,775,000	INITIAL	\$4,775,000
SQFT	2,011	PPSF	\$2,375	BEDS	2	BATHS	2.5
FEES	\$6,493	DOM	216				



15 EAST 30TH ST #45D

Nomad

TYPE	CONDO	STATUS	CONTRACT	ASK	\$4,750,000	INITIAL	N/A
SQFT	1,674	PPSF	\$2,838	BEDS	2	BATHS	2.5
FEES	\$5,710	DOM	N/A				



157 WEST 57TH ST #39E

Midtown

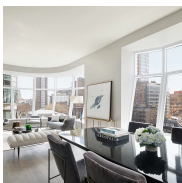
TYPE	CONDO	STATUS	CONTRACT	ASK	\$4,749,000	INITIAL	N/A
SQFT	1,351	PPSF	\$3,516	BEDS	1	BATHS	2
FEES	\$3,797	DOM	N/A				



15 EAST 30TH ST #44D

Nomad

TYPE	CONDO	STATUS	CONTRACT	ASK	\$4,700,000	INITIAL	N/A
SQFT	1,674	PPSF	\$2,808	BEDS	2	BATHS	2
FEES	\$5,710	DOM	N/A				



515 WEST 18TH ST #606

Chelsea

TYPE	CONDO	STATUS	CONTRACT	ASK	\$4,550,000	INITIAL	\$4,550,000
SQFT	1,725	PPSF	\$2,638	BEDS	2	BATHS	2.5
FEES	\$5,855	DOM	5				

Compass is a licensed real estate broker and abides by Equal Housing Opportunity laws. All material presented herein is intended for informational purposes only. Information is compiled from sources deemed reliable but is subject to errors, omissions, changes in price, condition, sale, or withdrawal without notice. No statement is made as to the accuracy of any description. All measurements and square footages are approximate. This is not intended to solicit property already listed. Nothing herein shall be construed as legal, accounting or other professional advice outside the realm of real estate brokerage.



212 WARREN ST #8L

Battery Park

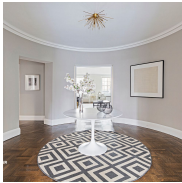
TYPE	CONDO	STATUS	CONTRACT	ASK	\$4,500,000	INITIAL	\$4,500,000
SQFT	2,277	PPSF	\$1,977	BEDS	4	BATHS	3.5
FEES	\$6,400	DOM	8				



101 WEST 12TH ST #8R

Greenwich Village

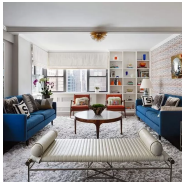
TYPE	COOP	STATUS	CONTRACT	ASK	\$4,495,000	INITIAL	\$4,495,000
SQFT	2,360	PPSF	\$1,905	BEDS	3	BATHS	3.5
FEES	\$4,410	DOM	23				



580 PARK AVE #6A

Upper East Side

TYPE	COOP	STATUS	CONTRACT	ASK	\$4,495,000	INITIAL	\$4,495,000
SQFT	N/A	PPSF	N/A	BEDS	3	BATHS	2.5
FEES	\$7,000	DOM	116				



1036 PARK AVE #12DE

Upper East Side

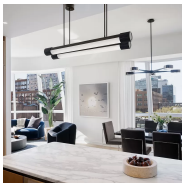
TYPE	COOP	STATUS	CONTRACT	ASK	\$4,350,000	INITIAL	\$4,600,000
SQFT	N/A	PPSF	N/A	BEDS	5	BATHS	4.5
FEES	N/A	DOM	81				



565 BROOME ST #S11C

Soho

TYPE	CONDO	STATUS	CONTRACT	ASK	\$4,275,000	INITIAL	\$4,595,000
SQFT	1,681	PPSF	\$2,544	BEDS	2	BATHS	2.5
FEES	\$4,645	DOM	275				



515 WEST 18TH ST #516

Chelsea

TYPE	CONDO	STATUS	CONTRACT	ASK	\$4,250,000	INITIAL	N/A
SQFT	1,614	PPSF	\$2,634	BEDS	2	BATHS	2.5
FEES	\$5,546	DOM	N/A				

Compass is a licensed real estate broker and abides by Equal Housing Opportunity laws. All material presented herein is intended for informational purposes only. Information is compiled from sources deemed reliable but is subject to errors, omissions, changes in price, condition, sale, or withdrawal without notice. No statement is made as to the accuracy of any description. All measurements and square footages are approximate. This is not intended to solicit property already listed. Nothing herein shall be construed as legal, accounting or other professional advice outside the realm of real estate brokerage.



445 LAFAYETTE ST #5A

Noho

TYPE	COOP	STATUS	CONTRACT	ASK	\$4,200,000	INITIAL	\$4,200,000
SQFT	2,248	PPSF	\$1,869	BEDS	3	BATHS	3
FEES	\$8,320	DOM	19				



170 EAST 87TH ST #E8AB

Carnegie Hill

TYPE	CONDO	STATUS	CONTRACT	ASK	\$4,100,000	INITIAL	\$4,895,000
SQFT	2,610	PPSF	\$1,571	BEDS	4	BATHS	4
FEES	\$5,694	DOM	509				



30 RIVERSIDE BLVD #34D

Lincoln Square

TYPE	CONDO	STATUS	CONTRACT	ASK	\$4,035,000	INITIAL	\$4,035,000
SQFT	1,491	PPSF	\$2,707	BEDS	2	BATHS	2.5
FEES	\$2,186	DOM	32				



130 WILLIAM ST #49D

Financial District

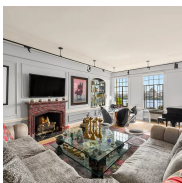
TYPE	CONDO	STATUS	CONTRACT	ASK	\$4,025,990	INITIAL	\$4,025,990
SQFT	1,771	PPSF	\$2,274	BEDS	3	BATHS	3
FEES	\$3,806	DOM	3				



15 EAST 30TH ST #37E

Nomad

TYPE	CONDO	STATUS	CONTRACT	ASK	\$4,000,000	INITIAL	\$4,000,000
SQFT	1,402	PPSF	\$2,854	BEDS	2	BATHS	2.5
FEES	\$4,751	DOM	52				



300 CENTRAL PARK WEST #12G2

Upper West Side

TYPE	COOP	STATUS	CONTRACT	ASK	\$3,975,000	INITIAL	\$4,750,000
SQFT	N/A	PPSF	N/A	BEDS	2	BATHS	2
FEES	\$4,637	DOM	205				

Compass is a licensed real estate broker and abides by Equal Housing Opportunity laws. All material presented herein is intended for informational purposes only. Information is compiled from sources deemed reliable but is subject to errors, omissions, changes in price, condition, sale, or withdrawal without notice. No statement is made as to the accuracy of any description. All measurements and square footages are approximate. This is not intended to solicit property already listed. Nothing herein shall be construed as legal, accounting or other professional advice outside the realm of real estate brokerage.



30 RIVERSIDE BLVD #34G

Lincoln Square

TYPE	CONDO	STATUS	CONTRACT	ASK	\$3,870,000	INITIAL	\$3,870,000
SQFT	1,491	PPSF	\$2,596	BEDS	2	BATHS	2
FEEES	\$2,081	DOM	462				



22 EAST 23RD ST #11A

Upper West Side

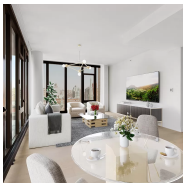
TYPE	CONDO	STATUS	CONTRACT	ASK	\$3,750,000	INITIAL	\$3,750,000
SQFT	1,328	PPSF	\$2,824	BEDS	2	BATHS	2
FEEES	\$4,339	DOM	36				



33 PARK ROW #9B

Financial District

TYPE	CONDO	STATUS	CONTRACT	ASK	\$3,595,000	INITIAL	\$3,450,000
SQFT	1,413	PPSF	\$2,545	BEDS	2	BATHS	2.5
FEEES	\$4,840	DOM	307				



212 WEST 95TH ST #12A

Upper West Side

TYPE	CONDO	STATUS	CONTRACT	ASK	\$3,525,000	INITIAL	\$3,525,000
SQFT	1,516	PPSF	\$2,326	BEDS	3	BATHS	3
FEEES	\$4,521	DOM	262				

Compass is a licensed real estate broker and abides by Equal Housing Opportunity laws. All material presented herein is intended for informational purposes only. Information is compiled from sources deemed reliable but is subject to errors, omissions, changes in price, condition, sale, or withdrawal without notice. No statement is made as to the accuracy of any description. All measurements and square footages are approximate. This is not intended to solicit property already listed. Nothing herein shall be construed as legal, accounting or other professional advice outside the realm of real estate brokerage.