



COMPASS

Brooklyn Luxury Report

Jun 15 - 22, 2026, Residential Contracts \$2M+

Photo: 168 Pacific Street

The Brooklyn luxury real estate market, defined as all properties priced \$2M and above, saw 28 contracts signed this week, made up of 14 condos, 1 co-op, and 13 houses. The previous week saw 30 deals. For more information or data, please reach out to a Compass agent.

\$3,326,764

Average Asking Price

\$2,900,000

Median Asking Price

\$1,545

Average PPSF

1%

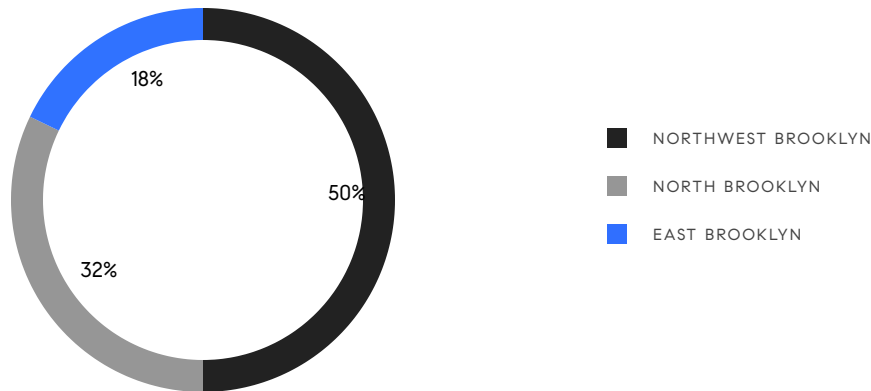
Average Discount

\$93,149,374

Total Volume

56

Average Days On Market



14

Condo Deal(s)

1

Co-op Deal(s)

13

Townhouse Deal(s)

\$3,079,599

Average Asking Price

\$2,995,000

Average Asking Price

\$3,618,462

Average Asking Price

\$2,549,843

Median Asking Price

\$2,995,000

Median Asking Price

\$3,150,000

Median Asking Price

\$1,850

Average PPSF

\$1,218

Average PPSF

1,685

Average SqFt

3,103

Average SqFt



181 Baltic Street, Unit TH

Cobble Hill

Contract Signed

Type	Condo	Price	\$7,195,000	Sq. Ft.	3,936	Beds	4
DOM	-	Initial	-	PPSF	\$1,828	Baths	3

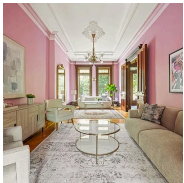


3 Wythe Lane

Williamsburg

Contract Signed

Type	Townhouse	Price	\$5,995,000	Sq. Ft.	4,470	Beds	4
DOM	89	Initial	\$5,995,000	PPSF	\$1,341	Baths	5

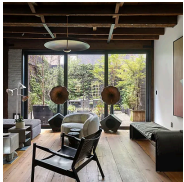


662 10th Street

Park Slope

Contract Signed

Type	Townhouse	Price	\$4,950,000	Sq. Ft.	3,376	Beds	6
DOM	18	Initial	\$4,950,000	PPSF	\$1,467	Baths	3.5

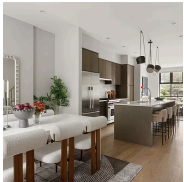


132 South 1st Street

Williamsburg

Contract Signed

Type	Townhouse	Price	\$4,500,000	Sq. Ft.	2,400	Beds	4
DOM	53	Initial	\$4,500,000	PPSF	\$1,875	Baths	3

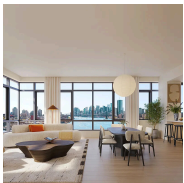


362A 6th Avenue

Park Slope

Contract Signed

Type	Townhouse	Price	\$4,495,000	Sq. Ft.	3,000	Beds	5
DOM	21	Initial	\$4,495,000	PPSF	\$1,499	Baths	4.5



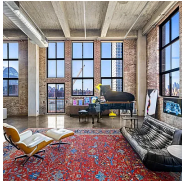
470 Kent Avenue, Unit 21B

Williamsburg

Contract Signed

Type	Condo	Price	\$3,999,999	Sq. Ft.	1,857	Beds	3
DOM	29	Initial	\$3,999,999	PPSF	\$2,155	Baths	3

Compass is a licensed real estate broker and abides by Equal Housing Opportunity laws. All material presented herein is intended for informational purposes only. Information is compiled from sources deemed reliable but is subject to errors, omissions, changes in price, condition, sale, or withdrawal without notice. No statement is made as to the accuracy of any description. All measurements and square footages are approximate. This is not intended to solicit property already listed. Nothing herein shall be construed as legal, accounting or other professional advice outside the realm of real estate brokerage.



330 Wythe Avenue, Unit 6J

Williamsburg

Contract Signed

Type	Condo	Price	\$3,995,000	Sq. Ft.	2,350	Beds	3
DOM	70	Initial	\$4,295,000	PPSF	\$1,700	Baths	2

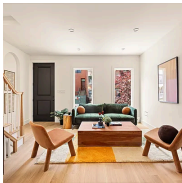


272 Greene Avenue

Clinton Hill

Contract Signed

Type	Townhouse	Price	\$3,850,000	Sq. Ft.	3,200	Beds	3
DOM	80	Initial	\$3,850,000	PPSF	\$1,204	Baths	3

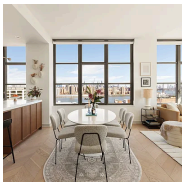


331 12th Street

Park Slope

Contract Signed

Type	Townhouse	Price	\$3,450,000	Sq. Ft.	2,200	Beds	4
DOM	38	Initial	\$3,595,000	PPSF	\$1,569	Baths	3.5



180 Front Street, Unit 11E

Dumbo

Contract Signed

Type	Condo	Price	\$3,150,000	Sq. Ft.	1,637	Beds	3
DOM	113	Initial	\$3,250,000	PPSF	\$1,925	Baths	2

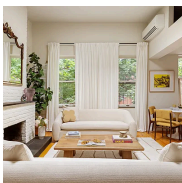


455 Union Street

Gowanus

Contract Signed

Type	Townhouse	Price	\$3,150,000	Sq. Ft.	2,400	Beds	3
DOM	48	Initial	\$3,150,000	PPSF	\$1,313	Baths	3.5



136 Pacific Street, Unit 3/4

Cobble Hill

Contract Signed

Type	Coop	Price	\$2,995,000	Sq. Ft.	-	Beds	3
DOM	16	Initial	\$2,995,000	PPSF	-	Baths	2

Compass is a licensed real estate broker and abides by Equal Housing Opportunity laws. All material presented herein is intended for informational purposes only. Information is compiled from sources deemed reliable but is subject to errors, omissions, changes in price, condition, sale, or withdrawal without notice. No statement is made as to the accuracy of any description. All measurements and square footages are approximate. This is not intended to solicit property already listed. Nothing herein shall be construed as legal, accounting or other professional advice outside the realm of real estate brokerage.



8 South 4th Street, Unit 24B

Williamsburg

Contract Signed

Type	Condo	Price	\$2,965,000	Sq. Ft.	1,357	Beds	2
DOM	-	Initial	\$2,965,000	PPSF	\$2,185	Baths	2.5

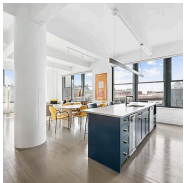


129 Calyer Street

Greenpoint

Contract Signed

Type	Townhouse	Price	\$2,950,000	Sq. Ft.	2,050	Beds	4
DOM	86	Initial	\$3,200,000	PPSF	\$1,440	Baths	2

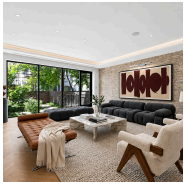


70 Washington Street, Unit 6G

Dumbo

Contract Signed

Type	Condo	Price	\$2,850,000	Sq. Ft.	1,737	Beds	2
DOM	21	Initial	\$2,850,000	PPSF	\$1,641	Baths	3

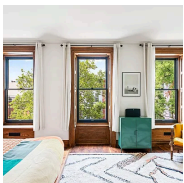


277 Midwood Street

Prospect Lefferts Gardens

Contract Signed

Type	Townhouse	Price	\$2,850,000	Sq. Ft.	3,120	Beds	4
DOM	13	Initial	\$2,850,000	PPSF	\$914	Baths	3.5

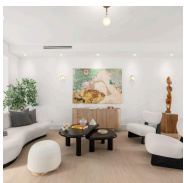


408 Macon Street

Bedford Stuyvesant

Contract Signed

Type	Townhouse	Price	\$2,800,000	Sq. Ft.	3,400	Beds	4
DOM	20	Initial	\$2,800,000	PPSF	\$824	Baths	3



533a Quincy Street

Bedford Stuyvesant

Contract Signed

Type	Townhouse	Price	\$2,750,000	Sq. Ft.	3,751	Beds	5
DOM	33	Initial	\$2,750,000	PPSF	\$734	Baths	4

Compass is a licensed real estate broker and abides by Equal Housing Opportunity laws. All material presented herein is intended for informational purposes only. Information is compiled from sources deemed reliable but is subject to errors, omissions, changes in price, condition, sale, or withdrawal without notice. No statement is made as to the accuracy of any description. All measurements and square footages are approximate. This is not intended to solicit property already listed. Nothing herein shall be construed as legal, accounting or other professional advice outside the realm of real estate brokerage.



166 Maple Street

Prospect Lefferts Gardens

Contract Signed

Type	Townhouse	Price	\$2,650,000	Sq. Ft.	2,528	Beds	3
DOM	32	Initial	\$2,650,000	PPSF	\$1,049	Baths	3.5

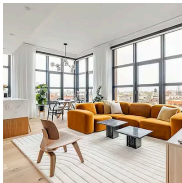


264 Decatur Street

Bedford Stuyvesant

Contract Signed

Type	Townhouse	Price	\$2,650,000	Sq. Ft.	4,436	Beds	5
DOM	131	Initial	\$3,000,000	PPSF	\$598	Baths	4



29 Huron Street, Unit 9FE

Greenpoint

Contract Signed

Type	Condo	Price	\$2,550,000	Sq. Ft.	1,376	Beds	3
DOM	-	Initial	-	PPSF	\$1,854	Baths	2.5

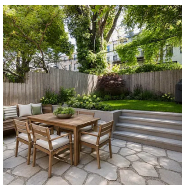


1 City Point, Unit 66C

Downtown Brooklyn

Contract Signed

Type	Condop	Price	\$2,549,685	Sq. Ft.	1,146	Beds	2
DOM	-	Initial	\$2,549,685	PPSF	\$2,225	Baths	2

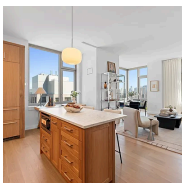


123 Fort Greene Place, Unit 1B

Fort Greene

Contract Signed

Type	Condo	Price	\$2,495,000	Sq. Ft.	1,765	Beds	3
DOM	16	Initial	\$2,495,000	PPSF	\$1,414	Baths	2.5



100 Jay Street, Unit 28F

Dumbo

Contract Signed

Type	Condo	Price	\$2,495,000	Sq. Ft.	1,601	Beds	3
DOM	41	Initial	\$2,495,000	PPSF	\$1,559	Baths	2

Compass is a licensed real estate broker and abides by Equal Housing Opportunity laws. All material presented herein is intended for informational purposes only. Information is compiled from sources deemed reliable but is subject to errors, omissions, changes in price, condition, sale, or withdrawal without notice. No statement is made as to the accuracy of any description. All measurements and square footages are approximate. This is not intended to solicit property already listed. Nothing herein shall be construed as legal, accounting or other professional advice outside the realm of real estate brokerage.



1 City Point, Unit 46C

Downtown Brooklyn

Contract Signed

Type	Condo	Price	\$2,349,690	Sq. Ft.	1,145	Beds	2
DOM	237	Initial	\$2,349,690	PPSF	\$2,053	Baths	2

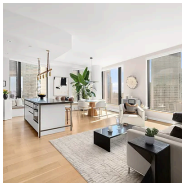


80 Metropolitan Avenue, Unit PHK

Williamsburg

Contract Signed

Type	Condo	Price	\$2,295,000	Sq. Ft.	1,242	Beds	2
DOM	45	Initial	\$2,295,000	PPSF	\$1,848	Baths	2



11 Hoyt Street, Unit 18E

Downtown Brooklyn

Contract Signed

Type	Condo	Price	\$2,175,000	Sq. Ft.	1,339	Beds	2
DOM	22	Initial	\$2,175,000	PPSF	\$1,625	Baths	2



29 Huron Street, Unit 7CE

Greenpoint

Contract Signed

Type	Condo	Price	\$2,050,000	Sq. Ft.	1,093	Beds	2
DOM	71	Initial	\$2,050,000	PPSF	\$1,876	Baths	2

Compass is a licensed real estate broker and abides by Equal Housing Opportunity laws. All material presented herein is intended for informational purposes only. Information is compiled from sources deemed reliable but is subject to errors, omissions, changes in price, condition, sale, or withdrawal without notice. No statement is made as to the accuracy of any description. All measurements and square footages are approximate. This is not intended to solicit property already listed. Nothing herein shall be construed as legal, accounting or other professional advice outside the realm of real estate brokerage.