



COMPASS

Brooklyn Luxury Report

Jun 08 - 14, 2026, Residential Contracts \$2M+

Photo: 168 Pacific Street

The Brooklyn luxury real estate market, defined as all properties priced \$2M and above, saw 30 contracts signed this week, made up of 12 condos, 1 co-op, and 17 houses. The previous week saw 25 deals. For more information or data, please reach out to a Compass agent.

\$4,197,600

Average Asking Price

\$3,575,000

Median Asking Price

\$1,476

Average PPSF

1%

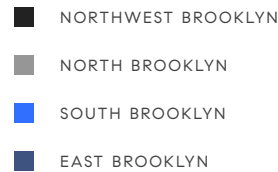
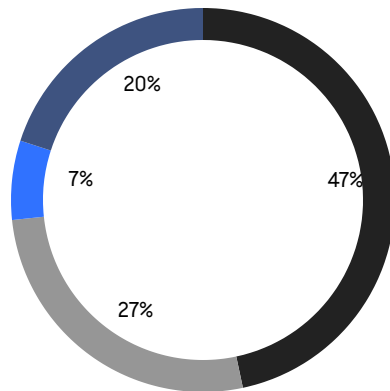
Average Discount

\$125,928,000

Total Volume

77

Average Days On Market



12

Condo Deal(s)

1

Co-op Deal(s)

17

Townhouse Deal(s)

\$3,689,584

Average Asking Price

\$2,295,000

Average Asking Price

\$4,668,118

Average Asking Price

\$2,840,000

Median Asking Price

\$2,295,000

Median Asking Price

\$3,795,000

Median Asking Price

\$1,881

Average PPSF

\$1,165

Average PPSF

1,978

Average SqFt

3,846

Average SqFt

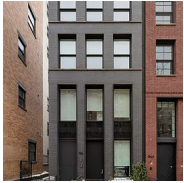


45 Douglass Street

Carroll Gardens

Contract Signed

Type	Townhouse	Price	\$11,500,000	Sq. Ft.	-	Beds	5
DOM	33	Initial	\$11,500,000	PPSF	-	Baths	4

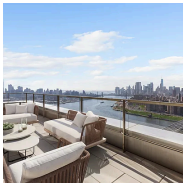


96 Amity Street

Cobble Hill

Contract Signed

Type	Townhouse	Price	\$9,750,000	Sq. Ft.	5,294	Beds	4
DOM	1	Initial	\$9,750,000	PPSF	\$1,842	Baths	4.5

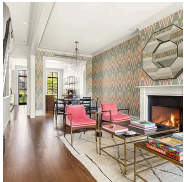


8 South 4th Street, Unit PH1B

Williamsburg

Contract Signed

Type	Condo	Price	\$7,750,000	Sq. Ft.	2,714	Beds	3
DOM	56	Initial	\$7,750,000	PPSF	\$2,856	Baths	3

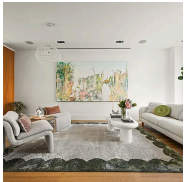


330 President Street

Carroll Gardens

Contract Signed

Type	Townhouse	Price	\$6,495,000	Sq. Ft.	3,680	Beds	5
DOM	36	Initial	\$6,495,000	PPSF	\$1,765	Baths	4

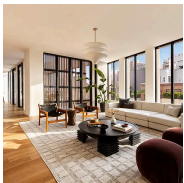


370 8th Street

Park Slope

Contract Signed

Type	Townhouse	Price	\$6,250,000	Sq. Ft.	3,907	Beds	4
DOM	84	Initial	\$6,500,000	PPSF	\$1,600	Baths	3.5



323 Bergen Street, Unit PH608E

Boerum Hill

Contract Signed

Type	Condo	Price	\$5,495,000	Sq. Ft.	3,013	Beds	4
DOM	99	Initial	\$5,495,000	PPSF	\$1,824	Baths	3.5

Compass is a licensed real estate broker and abides by Equal Housing Opportunity laws. All material presented herein is intended for informational purposes only. Information is compiled from sources deemed reliable but is subject to errors, omissions, changes in price, condition, sale, or withdrawal without notice. No statement is made as to the accuracy of any description. All measurements and square footages are approximate. This is not intended to solicit property already listed. Nothing herein shall be construed as legal, accounting or other professional advice outside the realm of real estate brokerage.



35 Irving Place

Clinton Hill

Contract Signed

Type	Townhouse	Price	\$5,450,000	Sq. Ft.	2,024	Beds	5
DOM	113	Initial	\$5,995,000	PPSF	\$2,693	Baths	5

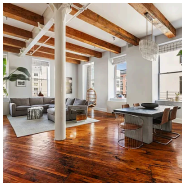


608 2nd Street

Bay Ridge

Contract Signed

Type	Townhouse	Price	\$5,200,000	Sq. Ft.	4,315	Beds	5
DOM	36	Initial	\$5,200,000	PPSF	\$1,206	Baths	3.5

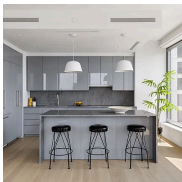


85 North 3rd Street, Unit 204

Williamsburg

Contract Signed

Type	Condo	Price	\$4,995,000	Sq. Ft.	2,430	Beds	3
DOM	237	Initial	\$5,495,000	PPSF	\$2,056	Baths	2

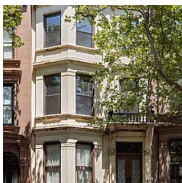


8 South 4th Street, Unit 42B

Williamsburg

Contract Signed

Type	Condo	Price	\$4,550,000	Sq. Ft.	1,913	Beds	3
DOM	-	Initial	\$4,550,000	PPSF	\$2,379	Baths	3.5

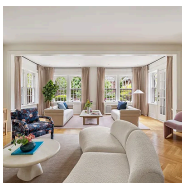


127 Lincoln Place

Park Slope

Contract Signed

Type	Townhouse	Price	\$4,500,000	Sq. Ft.	3,800	Beds	4
DOM	16	Initial	\$4,500,000	PPSF	\$1,185	Baths	3



63 Maple Street

Prospect Lefferts Gardens

Contract Signed

Type	Townhouse	Price	\$3,990,000	Sq. Ft.	5,000	Beds	5
DOM	30	Initial	\$3,990,000	PPSF	\$798	Baths	3.5

Compass is a licensed real estate broker and abides by Equal Housing Opportunity laws. All material presented herein is intended for informational purposes only. Information is compiled from sources deemed reliable but is subject to errors, omissions, changes in price, condition, sale, or withdrawal without notice. No statement is made as to the accuracy of any description. All measurements and square footages are approximate. This is not intended to solicit property already listed. Nothing herein shall be construed as legal, accounting or other professional advice outside the realm of real estate brokerage.

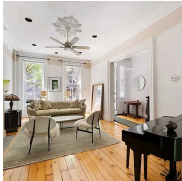


155 Noble Street, Unit 1

Greenpoint

Contract Signed

Type	Condo	Price	\$3,950,000	Sq. Ft.	3,694	Beds	4
DOM	41	Initial	\$3,950,000	PPSF	\$1,070	Baths	3.5

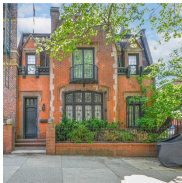


183 Waverly Avenue

Clinton Hill

Contract Signed

Type	Townhouse	Price	\$3,795,000	Sq. Ft.	3,400	Beds	5
DOM	25	Initial	\$3,795,000	PPSF	\$1,117	Baths	3

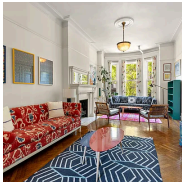


860 Union Street

Park Slope

Contract Signed

Type	Townhouse	Price	\$3,750,000	Sq. Ft.	3,894	Beds	6
DOM	391	Initial	\$3,850,000	PPSF	\$963	Baths	6



248 Gates Avenue

Bedford Stuyvesant

Contract Signed

Type	Townhouse	Price	\$3,400,000	Sq. Ft.	5,725	Beds	6
DOM	34	Initial	\$3,400,000	PPSF	\$594	Baths	5.5

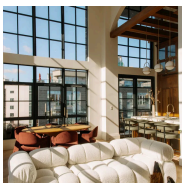


59 Garfield Place

Park Slope

Contract Signed

Type	Townhouse	Price	\$3,150,000	Sq. Ft.	-	Beds	4
DOM	29	Initial	\$3,150,000	PPSF	-	Baths	2.5



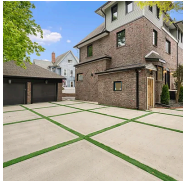
402 Union Avenue, Unit PH1

Williamsburg

Contract Signed

Type	Condo	Price	\$2,995,000	Sq. Ft.	1,580	Beds	3
DOM	210	Initial	\$3,150,000	PPSF	\$1,896	Baths	3

Compass is a licensed real estate broker and abides by Equal Housing Opportunity laws. All material presented herein is intended for informational purposes only. Information is compiled from sources deemed reliable but is subject to errors, omissions, changes in price, condition, sale, or withdrawal without notice. No statement is made as to the accuracy of any description. All measurements and square footages are approximate. This is not intended to solicit property already listed. Nothing herein shall be construed as legal, accounting or other professional advice outside the realm of real estate brokerage.



2103 Glenwood Road

Flatbush

Contract Signed

Type	Townhouse	Price	\$2,699,000	Sq. Ft.	3,843	Beds	5
DOM	40	Initial	\$2,699,000	PPSF	\$703	Baths	4



8 South 4th Street, Unit 33D

Williamsburg

Contract Signed

Type	Condo	Price	\$2,685,000	Sq. Ft.	1,303	Beds	2
DOM	-	Initial	\$2,685,000	PPSF	\$2,061	Baths	2

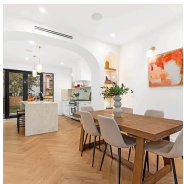


438 12th Street, Unit 6A

Park Slope

Contract Signed

Type	Condo	Price	\$2,600,000	Sq. Ft.	1,415	Beds	3
DOM	29	Initial	\$2,600,000	PPSF	\$1,838	Baths	2

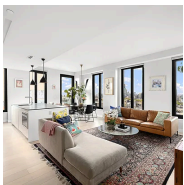


287 Midwood Street

Prospect Lefferts Gardens

Contract Signed

Type	Townhouse	Price	\$2,495,000	Sq. Ft.	3,040	Beds	4
DOM	20	Initial	\$2,495,000	PPSF	\$821	Baths	3

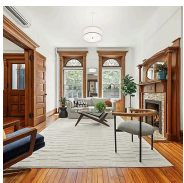


856 Washington Avenue, Unit 9A

Prospect Heights

Contract Signed

Type	Condo	Price	\$2,495,000	Sq. Ft.	1,618	Beds	3
DOM	44	Initial	\$2,495,000	PPSF	\$1,543	Baths	2.5



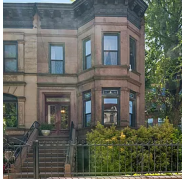
345 Gates Avenue

Bedford Stuyvesant

Contract Signed

Type	Townhouse	Price	\$2,399,000	Sq. Ft.	3,590	Beds	5
DOM	18	Initial	\$2,399,000	PPSF	\$669	Baths	2.5

Compass is a licensed real estate broker and abides by Equal Housing Opportunity laws. All material presented herein is intended for informational purposes only. Information is compiled from sources deemed reliable but is subject to errors, omissions, changes in price, condition, sale, or withdrawal without notice. No statement is made as to the accuracy of any description. All measurements and square footages are approximate. This is not intended to solicit property already listed. Nothing herein shall be construed as legal, accounting or other professional advice outside the realm of real estate brokerage.

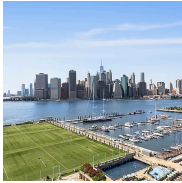


954 Park Place

Contract Signed

Crown Heights

Type	Townhouse	Price	\$2,385,000	Sq. Ft.	3,648	Beds	4
DOM	27	Initial	\$2,385,000	PPSF	\$654	Baths	2.5



360 Furman Street, Unit 933

Contract Signed

Brooklyn Heights

Type	Condo	Price	\$2,375,000	Sq. Ft.	1,430	Beds	2
DOM	29	Initial	\$2,375,000	PPSF	\$1,661	Baths	2

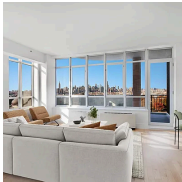


193 Kane Street, Unit 4

Contract Signed

Cobble Hill

Type	Coop	Price	\$2,295,000	Sq. Ft.	1,775	Beds	2
DOM	101	Initial	\$2,295,000	PPSF	\$1,293	Baths	2

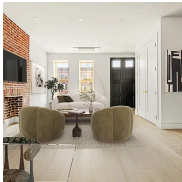


20 Bayard Street, Unit 12A

Contract Signed

Williamsburg

Type	Condo	Price	\$2,290,000	Sq. Ft.	1,200	Beds	2
DOM	114	Initial	\$2,350,000	PPSF	\$1,909	Baths	2

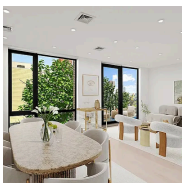


242 Albany Avenue

Contract Signed

Crown Heights

Type	Townhouse	Price	\$2,150,000	Sq. Ft.	2,525	Beds	5
DOM	181	Initial	\$2,250,000	PPSF	\$852	Baths	3



357 Leonard Street, Unit 2F

Contract Signed

Williamsburg

Type	Condo	Price	\$2,095,000	Sq. Ft.	1,421	Beds	2
DOM	63	Initial	\$2,095,000	PPSF	\$1,475	Baths	3

Compass is a licensed real estate broker and abides by Equal Housing Opportunity laws. All material presented herein is intended for informational purposes only. Information is compiled from sources deemed reliable but is subject to errors, omissions, changes in price, condition, sale, or withdrawal without notice. No statement is made as to the accuracy of any description. All measurements and square footages are approximate. This is not intended to solicit property already listed. Nothing herein shall be construed as legal, accounting or other professional advice outside the realm of real estate brokerage.