

JAN 16 - 22, 2023

The Brooklyn luxury real estate market, defined as all properties priced \$2M and above, saw 10 contracts signed this week, made up of 1 condo, and 9 houses. The previous week saw 8 deals. For more information or data, please reach out to a Compass agent.

\$2,839,600

Average Asking Price

\$2,649,500

Median Asking Price

\$765

Average PPSF

3%

Average Discount

\$28,396,000

Total Volume

158

Average Days On Market

188 Nelson Street in Carroll Gardens entered contract this week, with a last asking price of \$3,695,000. This townhouse spans 1,920 square feet with 5 beds and 3 full baths. It features an open parlor floor with large windows, a chef's kitchen with high-end appliances and custom cabinetry, a landscaped back yard with irrigation system and lighting, a primary bedroom with a custom walk-in closet and en-suite bath, floor-to-ceiling windows, radiant heated white oak plank flooring, and much more.

Also signed this week was 483 13th Street in Park Slope, with a last asking price of \$3,595,000. Originally built in 1897, this 3-story brownstone spans 3,050 square feet with 5 beds and 2 full baths. It features a large living room with wainscoting and carved wood and tile fireplace mantel, a large kitchen with custom cabinetry and high-end appliances, exposed brick, a landscaped garden, high ceilings, a stained glass skylight, a primary bedroom with adjacent dressing room, and much more.

1

Condo Deal(s)

0

Co-op Deal(s)

9

Townhouse Deal(s)

\$3,300,000

Average Asking Price

\$0

Average Asking Price

\$2,788,445

Average Asking Price

\$3,300,000

Median Asking Price

\$0

Median Asking Price

\$2,500,000

Median Asking Price

\$0

Average PPSF

N/A

Average PPSF

\$765

Average PPSF

0

Average SqFt

N/A

Average SqFt

3,632

Average SqFt



188 NELSON ST

Carroll Gardens

Type	Townhouse	Status	Contract	Ask	\$3,695,000
SqFt	N/A	Beds	5	Baths	3
PPSF	N/A	Fees	\$480	DOM	111



483 13TH ST

Park Slope

Type	Townhouse	Status	Contract	Ask	\$3,595,000
SqFt	3,050	Beds	5	Baths	2.5
PPSF	\$1,179	Fees	\$776	DOM	109



510 DRIGGS AVE #2B

Williamsburg

Type	Condo	Status	Contract	Ask	\$3,300,000
SqFt	N/A	Beds	3	Baths	2
PPSF	N/A	Fees	\$3,254	DOM	376



144 WESTMINSTER RD

Prospect Park South

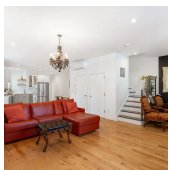
Type	Townhouse	Status	Contract	Ask	\$3,295,000
SqFt	3,563	Beds	7	Baths	4
PPSF	\$925	Fees	\$1,007	DOM	51



2174 EAST 5TH ST

Gravesend

Type	Townhouse	Status	Contract	Ask	\$2,799,000
SqFt	3,960	Beds	6	Baths	3
PPSF	\$707	Fees	\$7,365	DOM	114



26 REEVE PL

Windsor Terrace

Type	Townhouse	Status	Contract	Ask	\$2,500,000
SqFt	3,200	Beds	4	Baths	4
PPSF	\$782	Fees	\$590	DOM	132

Compass is a licensed real estate broker and abides by Equal Housing Opportunity laws. All material presented herein is intended for informational purposes only. Information is compiled from sources deemed reliable but is subject to errors, omissions, changes in price, condition, sale, or withdrawal without notice. No statement is made as to the accuracy of any description. All measurements and square footages are approximate. This is not intended to solicit property already listed. Nothing herein shall be construed as legal, accounting or other professional advice outside the realm of real estate brokerage.

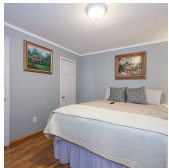


829A GREENE AVE

Bedford Stuyvesant

Type	Townhouse	Status	Contract
Sqft	3,780	Beds	6
PPSF	\$662	Fees	\$248

Ask	\$2,499,000
Baths	4
DOM	193

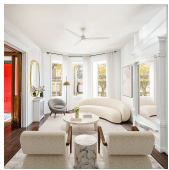


274 19TH ST

Greenwood

Type	Townhouse	Status	Contract
Sqft	3,200	Beds	8
PPSF	\$743	Fees	\$400

Ask	\$2,375,000
Baths	4
DOM	292



181 FENIMORE ST

Prospect Lefferts Gardens

Type	Townhouse	Status	Contract
Sqft	3,100	Beds	4
PPSF	\$710	Fees	\$658

Ask	\$2,200,000
Baths	3.5
DOM	63



1608 AVE R

Homecrest

Type	Townhouse	Status	Contract
Sqft	5,200	Beds	11
PPSF	\$412	Fees	\$1,267

Ask	\$2,138,000
Baths	7
DOM	130

Compass is a licensed real estate broker and abides by Equal Housing Opportunity laws. All material presented herein is intended for informational purposes only. Information is compiled from sources deemed reliable but is subject to errors, omissions, changes in price, condition, sale, or withdrawal without notice. No statement is made as to the accuracy of any description. All measurements and square footages are approximate. This is not intended to solicit property already listed. Nothing herein shall be construed as legal, accounting or other professional advice outside the realm of real estate brokerage.