

APRIL 19 - 25, 2021

The Long Island City luxury real estate market, defined as all properties priced \$1M and above, saw 17 contracts signed this week, made up of 17 condos. The previous week saw 6 deals.

\$1,443,446

Average Asking Price

\$1,455,302

Median Asking Price

\$1,396

Average PPSF

2%

Average Discount

\$24,538,582

Total Volume

305

Average Days On Market

Unit G1B at Greystone, located at 5-25 47th Road in Hunters Point, entered contract this week, with a last asking price of \$1,850,000. This sponsor sale condo was built in 2020 and spans 1,902 square feet with 3 beds and 2 baths. Designed as a duplex townhouse-style condo, it features 1,147 square feet of private garden, 9-foot ceilings, brick interior walls, Brazilian cherry wood floors with radiant heat, expansive windows, air conditioning, and a washer & dryer. The building offers a communal roof garden, fitness center, virtual doorman, on-site parking garage, and storage.

Also signed this week was Unit 414 at Arris Lofts, located at 27-28 Thomson Avenue in Hunters Point, with a last asking price of \$1,750,000. Originally built in 1920 and converted in 2008, this loft-style condo spans 1,762 square feet with 3 beds and 2 baths. It features 15-foot ceilings with 9-foot wall-to-wall casement windows, Venetian plastered walls, a designer kitchen with upgraded cabinetry and high-end appliances, and a master suite with an en-suite spa bathroom outfitted with marble flooring. The building offers a 24-hour attended lobby, massive fitness center, Japanese Zen garden, and a roof terrace.

17

Condo Deal(s)

0

Co-op Deal(s)

0

Townhouse Deal(s)

\$1,443,446

Average Asking Price

\$0

Average Asking Price

\$0

Average Asking Price

\$1,455,302

Median Asking Price

\$0

Median Asking Price

\$0

Median Asking Price

\$1,396

Average PPSF

N/A

Average PPSF

\$0

Average PPSF

1,076

Average SqFt

N/A

Average SqFt

0

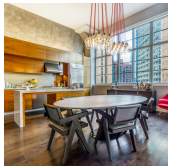
Average SqFt



GREYSTONE (5-25 47 RD) #G1B

Hunters Point

Type	Condo	Status	Contract	Ask	\$1,850,000
SqFt	1,902	Beds	1	Baths	1.5
PPSF	\$973	Fees	\$1,657	DOM	189



ARRIS LOFTS (27-28 THOMPSON AVE) #414 Hunters Point

Type	Condo	Status	Contract	Ask	\$1,750,000
SqFt	1,762	Beds	1	Baths	2
PPSF	\$994	Fees	\$1,572	DOM	104



SKYLINE TOWER (3 CT SQ) #5102

Hunters Point

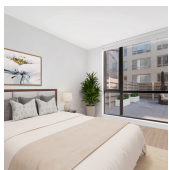
Type	Condo	Status	Contract	Ask	\$1,729,050
SqFt	985	Beds	2	Baths	2
PPSF	\$1,756	Fees	\$1,876	DOM	N/A



THE FOUNDRY (2-40 51 AVE) #4J

Hunters Point

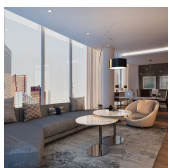
Type	Condo	Status	Contract	Ask	\$1,712,500
SqFt	1,306	Beds	3	Baths	2
PPSF	\$1,312	Fees	\$2,102	DOM	N/A



LIV (11-30 45 RD) #2E

Hunters Point

Type	Condo	Status	Contract	Ask	\$1,580,000
SqFt	1,100	Beds	2	Baths	2
PPSF	\$1,437	Fees	\$1,667	DOM	39



STAR TOWER (27-17 42 RD) #11E

Hunters Point

Type	Condo	Status	Contract	Ask	\$1,553,888
SqFt	1,228	Beds	2	Baths	2
PPSF	\$1,266	Fees	\$1,473	DOM	462

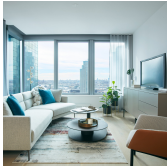
Compass is a licensed real estate broker and abides by Equal Housing Opportunity laws. All material presented herein is intended for informational purposes only. Information is compiled from sources deemed reliable but is subject to errors, omissions, changes in price, condition, sale, or withdrawal without notice. No statement is made as to the accuracy of any description. All measurements and square footages are approximate. This is not intended to solicit property already listed. Nothing herein shall be construed as legal, accounting or other professional advice outside the realm of real estate brokerage.



SKYLINE TOWER (3 CT SQ) # 2008

Hunters Point

Type	Condo	Status	Contract	Ask	\$1,516,926
Sqft	978	Beds	2	Baths	2
PPSF	\$1,552	Fees	\$1,895	DOM	N/A



SKYLINE TOWER (3 CT SQ) # 3908

Hunters Point

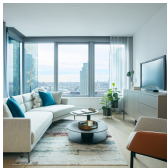
Type	Condo	Status	Contract	Ask	\$1,495,100
Sqft	964	Beds	2	Baths	2
PPSF	\$1,551	Fees	\$1,836	DOM	724



SKYLINE TOWER (3 CT SQ) # 908

Hunters Point

Type	Condo	Status	Contract	Ask	\$1,455,302
Sqft	978	Beds	2	Baths	2
PPSF	\$1,489	Fees	\$1,895	DOM	664



SKYLINE TOWER (3 CT SQ) # 808

Hunters Point

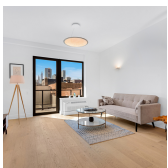
Type	Condo	Status	Contract	Ask	\$1,450,140
Sqft	978	Beds	2	Baths	2
PPSF	\$1,483	Fees	\$1,895	DOM	N/A



THE ZIPPER (5-33 48 AVE) # 5K

Hunters Point

Type	Condo	Status	Contract	Ask	\$1,375,000
Sqft	960	Beds	2	Baths	2
PPSF	\$1,433	Fees	\$2,004	DOM	53



THE JACKSON (13-33 JACKSON AVE) # 3G

Hunters Point

Type	Condo	Status	Contract	Ask	\$1,330,000
Sqft	1,187	Beds	3	Baths	2
PPSF	\$1,121	Fees	\$1,373	DOM	244

Compass is a licensed real estate broker and abides by Equal Housing Opportunity laws. All material presented herein is intended for informational purposes only. Information is compiled from sources deemed reliable but is subject to errors, omissions, changes in price, condition, sale, or withdrawal without notice. No statement is made as to the accuracy of any description. All measurements and square footages are approximate. This is not intended to solicit property already listed. Nothing herein shall be construed as legal, accounting or other professional advice outside the realm of real estate brokerage.



SKYLINE TOWER (3 CT SQ) #2205

Hunters Point

Type	Condo	Status	Contract
Sqft	932	Beds	2
PPSF	\$1,370	Fees	\$1,775

Ask	\$1,276,137
Baths	2
DOM	N/A



PRIME LIC (22-43 JACKSON AVE) #41

Hunters Point

Type	Condo	Status	Contract
Sqft	972	Beds	2
PPSF	\$1,245	Fees	\$1,290

Ask	\$1,210,000
Baths	2
DOM	28

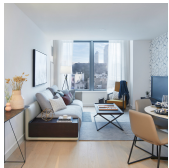


SKYLINE TOWER (3 CT SQ) #4603

Hunters Point

Type	Condo	Status	Contract
Sqft	687	Beds	1
PPSF	\$1,713	Fees	\$1,309

Ask	\$1,176,313
Baths	1
DOM	N/A



SKYLINE TOWER (3 CT SQ) #1210

Hunters Point

Type	Condo	Status	Contract
Sqft	678	Beds	1
PPSF	\$1,591	Fees	\$1,291

Ask	\$1,078,226
Baths	1
DOM	543



GALERIE (22-18 JACKSON AVE) #PH6

Hunters Point

Type	Condo	Status	Contract
Sqft	692	Beds	1
PPSF	\$1,446	Fees	\$1,475

Ask	\$1,000,000
Baths	1
DOM	N/A

Compass is a licensed real estate broker and abides by Equal Housing Opportunity laws. All material presented herein is intended for informational purposes only. Information is compiled from sources deemed reliable but is subject to errors, omissions, changes in price, condition, sale, or withdrawal without notice. No statement is made as to the accuracy of any description. All measurements and square footages are approximate. This is not intended to solicit property already listed. Nothing herein shall be construed as legal, accounting or other professional advice outside the realm of real estate brokerage.